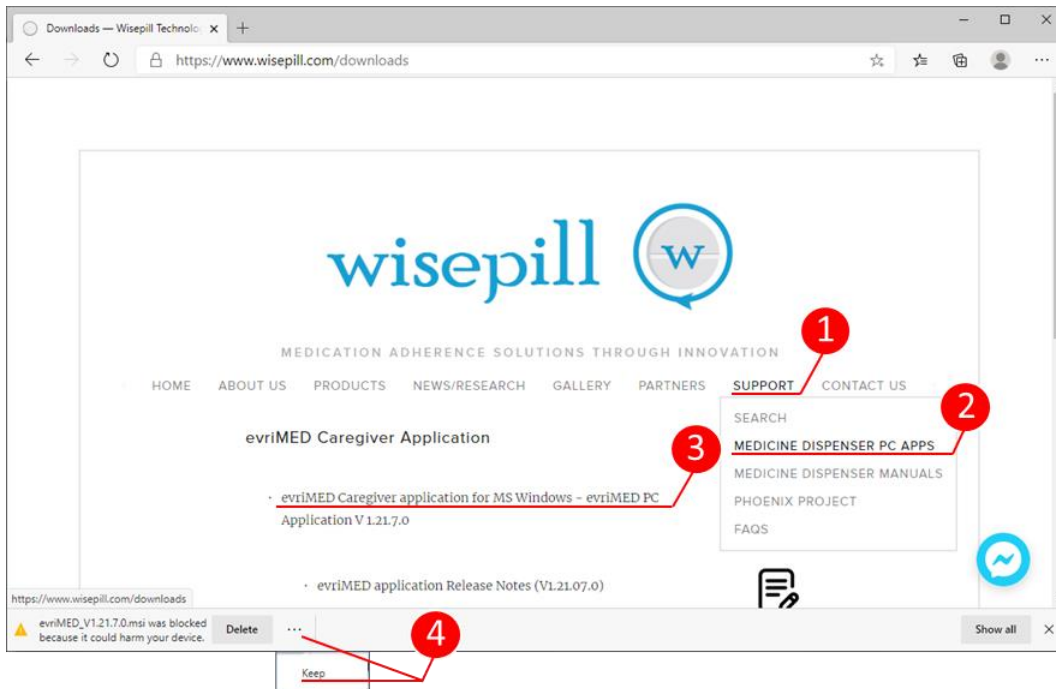
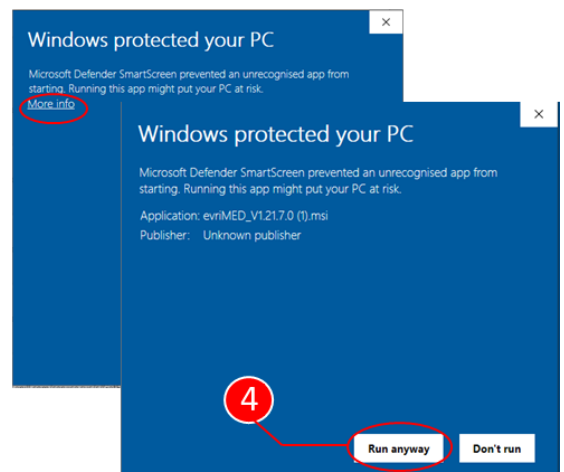
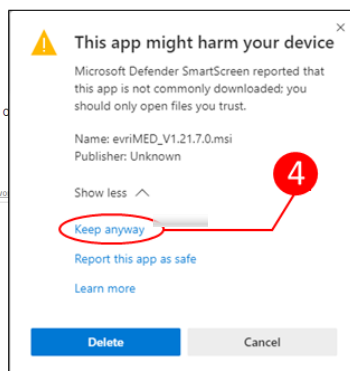
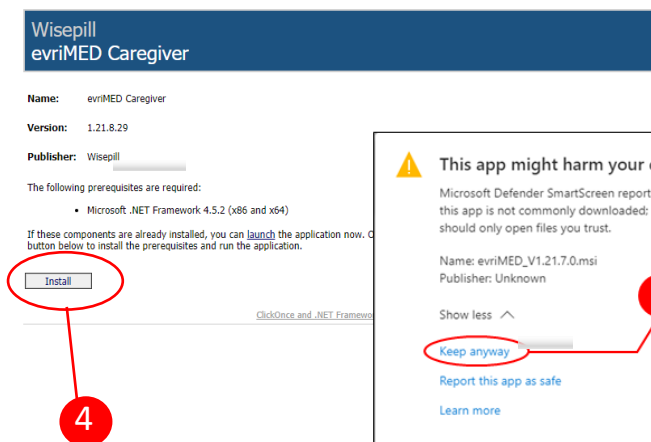


evriMED MS Windows Application Installation and Firmware Upgrade Guide

From the Wisepill website (<http://www.wisepill.com>):

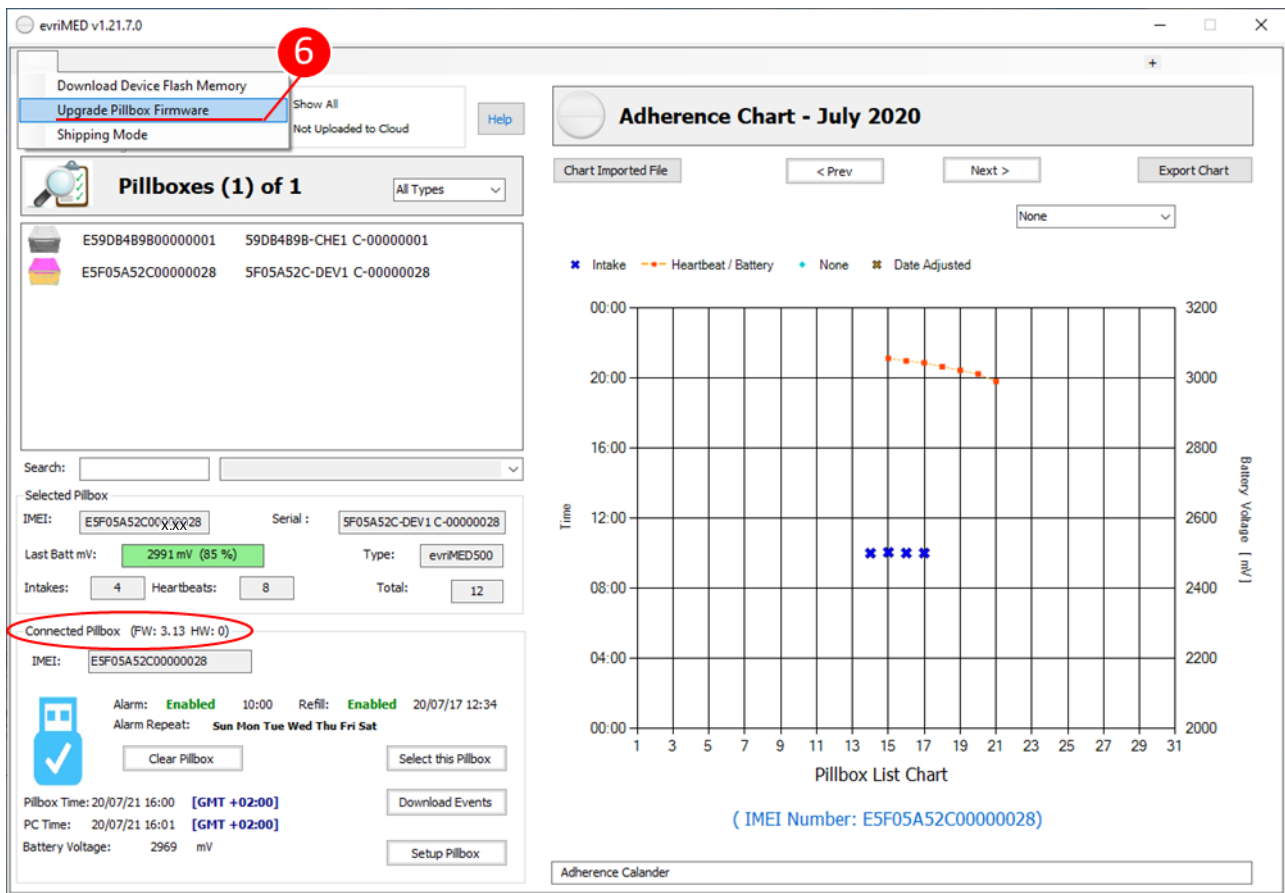


- 1 Click on Support
- 2 Click on MEDICINE DISPENSER PC APPS
- 3 Click on evriMED Caregiver application for MS Windows
- 4 Your browser or antivirus software may block or warn you about downloading the file, please ignore these errors and run the download the installer file.

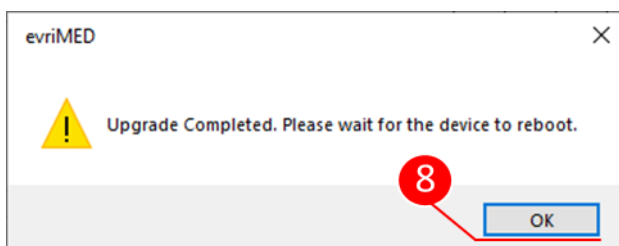


 This version of the evriMED PC Application includes all the files needed for the firmware upgrade.

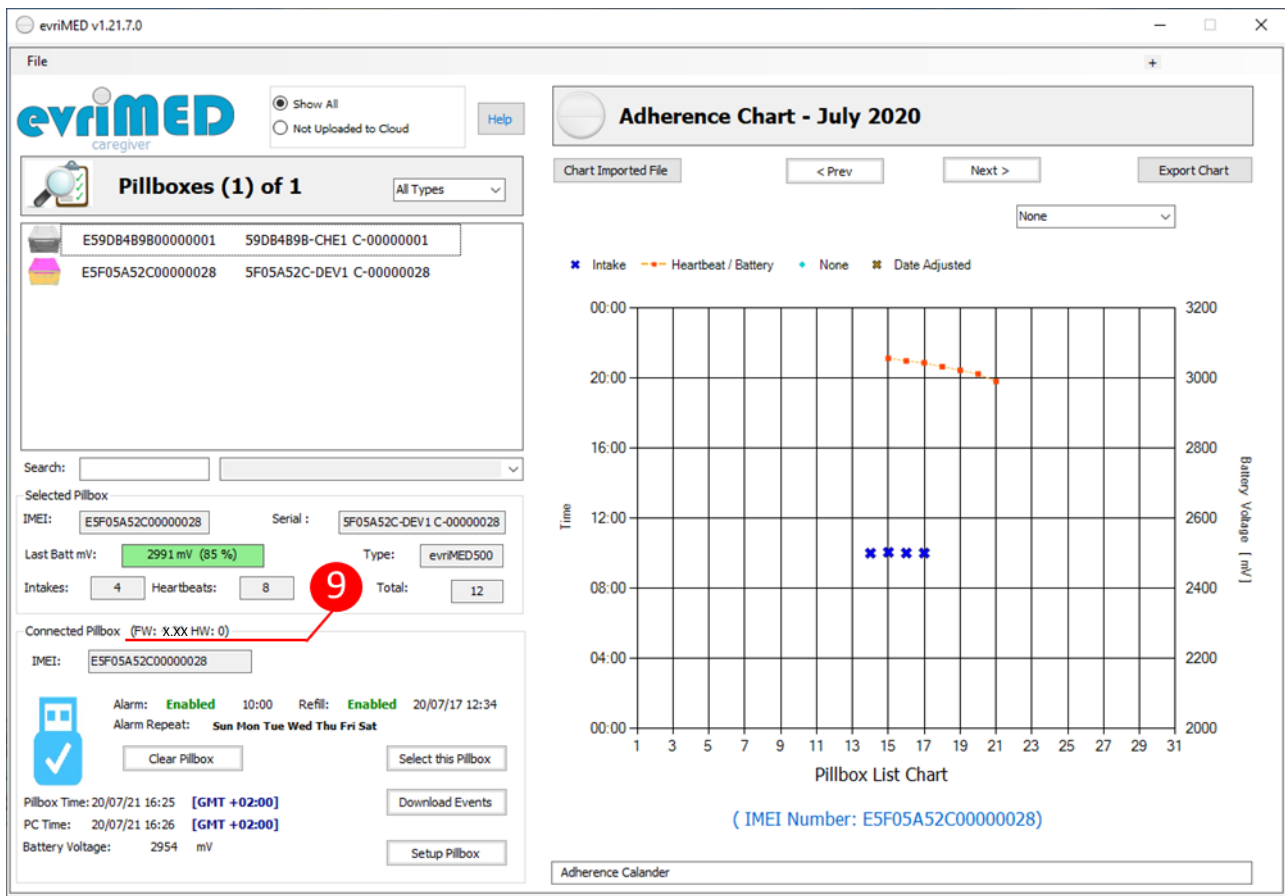
- 5 Run the evriMED PC Application
- 6 Connect the evriMED dispenser to the PC/laptop via the USB cable provided. Click on File, then Upgrade Pillbox Firmware. A Windows explorer window will pop up with the location where the firmware is located



- 7 Click on the .enc firmware upgrade file, then click "Open"
- 8 The firmware is now upgraded. Click OK once the device has rebooted.



9 Check and verify that the Firmware has been upgraded with the latest firmware version



Notice

Once installed, the evriMED Caregiver application will automatically look for updates every time it is run. If a new update is available, it will offer you the option to upgrade to the latest version.